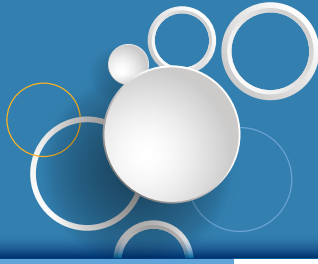


## CASE STUDY VIACAR S.A.



# VIACAR AVOIDS MISTAKES AND ACCELERATES DELIVERY TIME WITH ENTERSOFT WMS®

### Industry

Automotive spare parts imports

### Customer Profile

VIACAR S.A. is operating in the import and distribution industry of spare parts for cars and trucks. Spare parts are manufactured in the overwhelming majority in Europe and come from the largest and most reputed spare parts stores worldwide. It has a wide distribution network with reliable and experienced collaborators, covering the entire Greek geographical area.

### Users

39

### Challenge

Accurate depiction of warehouse space and warehouse layout as well as inventory and product location, while tracking thousands of active codes and locations.

### Solution

Entersoft WMS®

### Benefits

- Reduction of the total logistics cost regarding man-hours, error prevention, and time required to perform procedures
- Increased capacity for satisfying sales orders without any change in resources
- Implementation of simple, specific procedures that result in exceptional benefits for the company
- Impressive reduction of errors and failures in stocks and orders

“Today, it is not possible for a company with complex and demanding logistics procedures to function properly and profitably without implementing a comprehensive Warehouse Management System (WMS). Entersoft recognised this and proceeded to create a product to cover exactly the above need. And VIACAR S.A. did not regret having once again trusted Entersoft in this field”

*Alexander Levis, VIACAR S.A. General Manager*

### Company

The main activity of VIACAR S.A. is to import from abroad and distribute in the Greek market spare parts for all types and models of passenger cars and trucks, of European, Japanese and Korean manufacturers. It has an extensive distribution channel of 1.000 reliable and experienced associates that cover the whole area of Greece. The two main Greek cities, Athens and Thessaloniki, are covered through approximately 70 daily deliveries which ensure that the needs of the company's distribution network and the 2.000 daily orders are covered on time.

### Challenge

Before the installation and use of Entersoft WMS®, significant difficulties were observed regarding inventory management. There was no depiction of the storage area and the warehouse layout, while inventory data and product locations were unclear.

Furthermore, monitoring of 100.000 of active codes and 10.000 locations was implemented using manual recording. This was a painstaking and time-consuming procedure with serious shortcomings that yielded inaccurate results. The important procedure of product receipt was implemented using visual identification and manual counting. This involved a high risk of error, while the receipt completion time was prohibitively long, even reaching 3 days when a container was received. Moreover, the execution of orders was carried out with the help of printouts, while product retrieval was based on indications, not certainty, due to the lack of automation.

The already dysfunctional procedure was further exacerbated following the start of operation of the company's new distribution centre in Aspropyrgos. As soon as the main bulk of products was directed to the new centre, it was evident that the design implemented to date had to be changed, as it prevented not only the company's development through the provision of new and improved services to its customers, but also its response to the current needs.

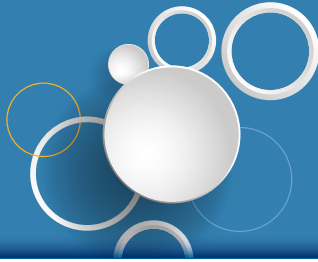
### The Solution

VIACAR S.A. knew that the solution to the challenges it was facing was to adopt a reliable Warehouse Management System (WMS). After assessing a number of options, the company selected Entersoft WMS® for three key reasons.

## CASE STUDY VIACAR S.A.



**VIACAR S.A.**  
REPRESENTATIVES - IMPORTS OF CAR PARTS



### Modern product

Already from their first experience with the product, VIACAR S.A. executives acknowledged its "freshness" versus other competitive solutions. Entersoft WMS® is accompanied by a number of functionalities, integrating the most modern Supply Chain Management concepts.

### Effective design and implementation

All Entersoft personnel participating in the WMS project implementation team are experts in the specific field. They mostly come from the Supply Chain sector and have a long experience in project implementation from Supply Chain management and administration positions.

### Absolute integration

The key advantage of the solution is that it forms part of the Entersoft Business Suite (EBS). This eliminates the need to implement interfaces between the various applications; VIACAR S.A. has always believed in "one software provider for the total requirement". Entersoft consultants carried out a thorough analysis of the way the company worked and proposed solutions and advice for the best implementation practice. Today, in less than 2 months, a total of 39 VIACAR executives can use and benefit from Entersoft WMS®.

**Specifically, the installation of Entersoft WMS® at the company's main distribution centre in Aspropyrgos, includes the following functionalities, among others:**

**Creation of product collection** and reservation lists based on the actual inventory, ensuring availability upon collection

**Cross Docking**, during receipt in order to automatically separate quantities to replenish branch office stocks

**Collection of multiple orders** in one collection cart

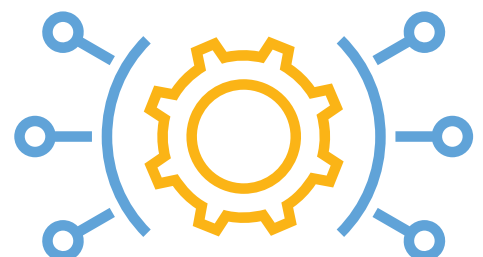
**Receipts separated** per floor and deposition corridor and execution of the respective depositions, with a **simultaneous calculation of the optimal route**

**Installation of packing stations** and automated printing of labels and content lists

**Automatic selection** of the optimal collection route per floor and corridor for all orders

**Automatic inventory updates** in the ERP system

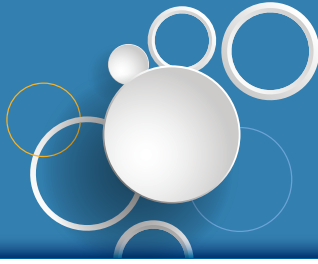
**Item registration using a scanner** for maximum speed and accuracy



## CASE STUDY VIACAR S.A.

**VIACAR S.A.**

REPRESENTATIVES - IMPORTS OF CAR PARTS



### The benefits

Already from the first year of implementation of the Entersoft WMS®, the company has seen a number of visible benefits.

- Reduction of the total logistics cost regarding man-hours, error prevention, and time required to perform procedures
- Implementation of simple, specific procedures that result in exceptional benefits for the company
- Impressive reduction of errors and failures in stocks and orders

## Measurable benefits

---



**30% increase in receipt time**



**40% impressive reduction of errors and failures**  
in stocks and orders



**30% reduction of the total logistics cost**



**40% increased capacity for satisfying sales orders**  
without any change in resources